


Mouse LIF Protein, His tag (Animal-Free)

Cat #: PRP1160

Size: 5 µg/20 µg/100 µg/1 mg

Product Information

	Product Name: Mouse LIF Protein, His tag (Animal-Free)		
REF	Catalog Number: PRP1160	LOT	Lot Number: Refer to product label
	Purity: > 95 % as determined by SDS-PAGE		
	Storage: Store at -20°C		Preparation method: E.coli
	Shipping: The product is shipped at ambient temperature.		

Background: Leukemia inhibitory factor (LIF) is a pleiotropic glycoprotein, belonging to the IL-6 receptor family. Mouse LIF shares 79% sequence homology with human LIF. LIF is a 19.7 kDa protein containing 202 amino acid which high expression in human liver, bone, uterus, kidney and the central nervous system. LIF is a inducer of differentiation in M1 leukaemia cells, osteoblasts and glia. Not only stimulates proliferation of DA1 cells inhibit proliferation of corticotrophs and promote cell survival in some cell types but also induces apoptosis in others.

Sequence: Amino acid sequence derived from Mouse LIF (Ser114-Phe 203) (P01137) was expressed with 6×His tag at the N-terminus.

Protein length: The recombinant Mouse LIF Protein consists of 90 amino acids and predicts a molecular mass of 20.68 kDa.

Biological Activity: Measured by its ability to induce IL-6 secretion in M1 cells. The ED₅₀ for this effect is <0.5 ng/mL.

Endotoxin: <0.1 EU per µg of the protein as determined by the LAL method.

Formulation: Lyophilized from sterile PBS, pH 7.4.

Storage Instructions: Lyophilized protein product should be stored desiccated below -18°C. Upon reconstitution, the protein should be stored at 4°C between 2-7 days and for future use below -18°C. For long term storage it is recommended to add a carrier protein (5% HSA , 10%FBS or 0.1%BSA). Please prevent freeze-thaw cycles.

Usage notes: Always centrifuge tubes before opening. It is recommended to reconstitute the lyophilized recombinant protein to a concentration of 0.1-1 mg/mL using the buffer we provided, and keep at room temperature for at least 20 min to fully dissolve. Please avoid vortex vigorously.

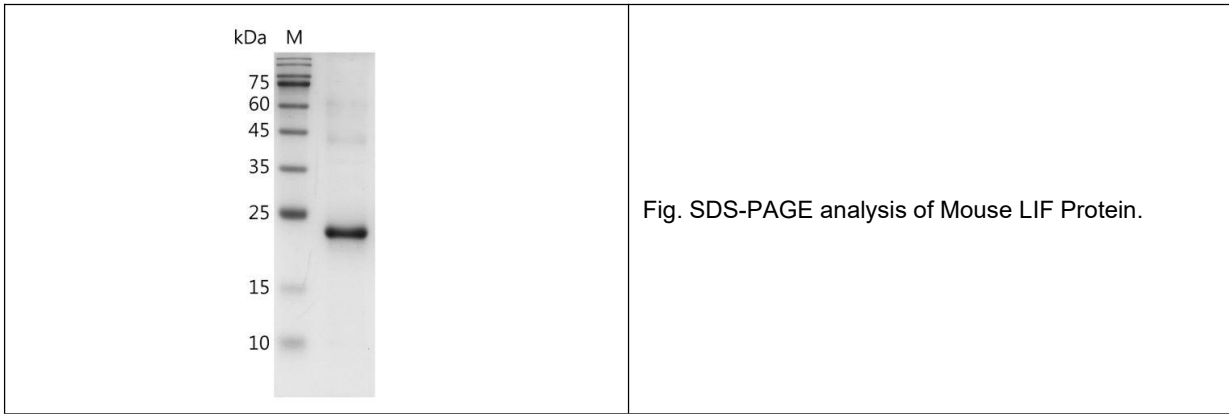


Fig. SDS-PAGE analysis of Mouse LIF Protein.

Note: The product listed herein is for research use only and is not intended for use in human or clinical diagnosis. Suggested applications of our products are not recommendations to use our products in violation of any patent or as a license. We cannot be responsible for patent infringements or other violations that may occur with the use of this product.